

Be The Vibes

Tree of Life Pendant

Supplies:

- 18 gauge wire - 9"
- 26 gauge wire - 60"
- Chip Beads

Tools:

- Wire Cutters
- Round Nose Pliers
- Nylon Jaw Pliers
- Bent or Chain Nose Pliers
- Mandrel (Essential Oil or Spice Bottle will work)
- Steel Bench Block and Nylon Hammer

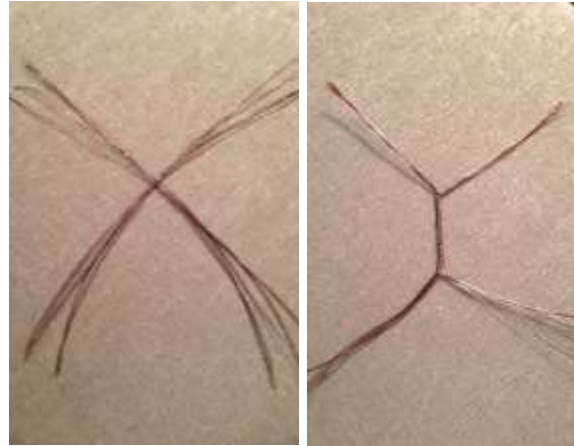


1. Straighten and harden the pieces of wire with nylon jaw pliers.
2. Take the 18 gauge wire and form it into a circle using a mandrel (I use an essential oil bottle that is about 5 inches around in this example). One end of the wire will be shorter than the other. The shorter end should be around 2 or 3 inches. At the point where the wires cross, bend the longer wire at a 90 degree angle away from the mandrel using a chain nose plier.
3. Wrap the shorter piece around the longer piece, just above the bend 4 times. Trim the excess from the shorter wire and leave the longer wire straight until a later step.



4. Use a nylon hammer to harden the circle on the steel bench block. Hammer both sides.
5. Cut the 26 gauge wire into ten 6 inch pieces.

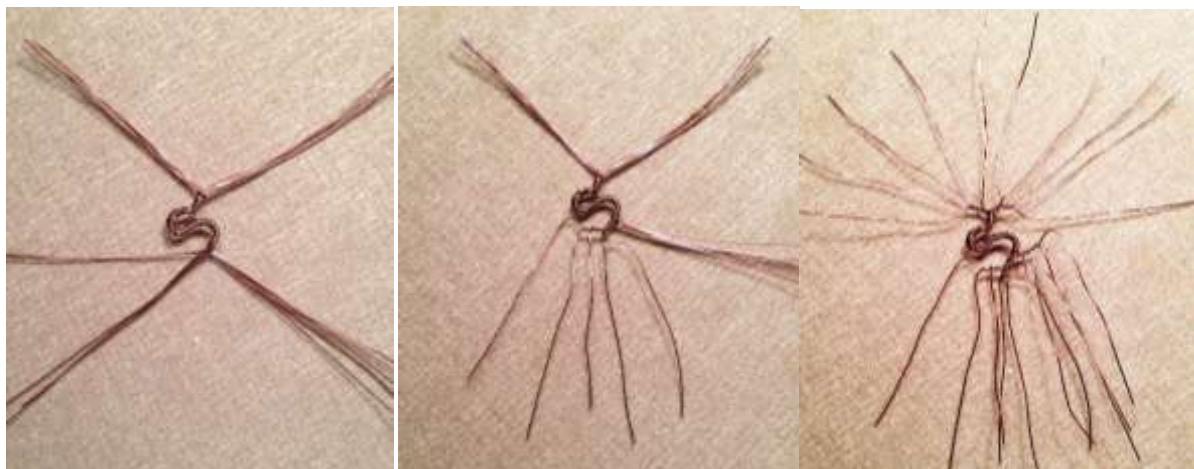
6. Take all of the 26 gauge wire and divide into two even groups. Hold them so they cross like an X holding the top and bottom of the X with your thumb and forefinger with both hands. Twist your hands away from each other to form a tight twist with the wire for about an inch. Twist your hands away from each other to form a tight twist with the wire for about an inch.



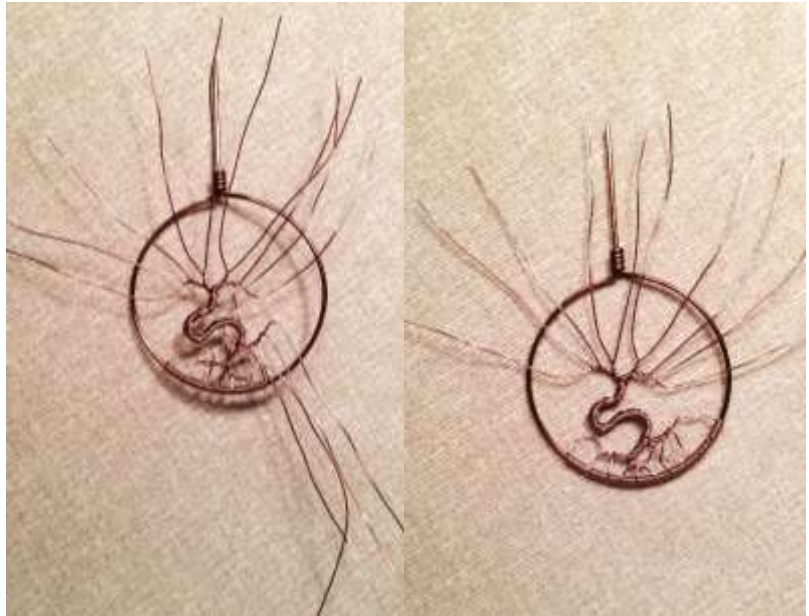
7. Gently clasp the trunk at one end of the twisted part and push the trunk over to the side to form a curve. Loosen your grip with the round nose and rotate the round nose to the top of the curve created and twist the wire over the top of the round nose the other way. This will create an "S" curve for the trunk.



8. There will now be four groups of wire. Choose which two will be the roots of your tree. Split each group close to half and twist a couple times each. In my example I have split one side again and twisted to make more roots. Repeat this step to create the branches on the top of the tree. Keep in mind the more twists, the less leaves/chips you will be able to use on the top of the tree.



9. Spread out the wire pieces towards the bottom of the wire circle. Take the wire piece farthest on the left and right and attach them to the hoop by wrapping it two or three times around the wire circle. You can cross some of the wire pieces to create a more organic look or attach them straight down. You can either wrap each piece two or three times around the wire circle or you can wrap some of them more to fill in the gaps between the roots (the second is what I chose to do for the sample pictures). Trim off the excess wire and, using the bent nose pliers, gently tuck the wire ends in as close to the 18 gauge wire as you can without bending the outer circle.



10. For the top of the tree, spread the wire out again towards the top of the wire circle. Divide the wire evenly to the left and right of the top wire. Starting on the left side, begin adding beads. Once there are enough beads to meet the outer wire circle, wrap the wire two or three times to secure it. Continue this step until the top of the tree is complete. Trim and tuck the excess wire as you go or at the end of this step.



11. Make a simple loop at the top. Clasp the wrapped wire at the top with bent or chain nose pliers (over the wrapped 18 gauge wire), then pull the wire towards you at a 90 degree angle. Set the bent/chain nose pliers aside and clasp the wire end at the bend with round nose pliers. Wrap the wire end up and over the top of the round nose (do not complete the loop). Remove the round nose pliers and trim the 18 gauge wire close to the bottom of the loop. Tuck the wire end in with the round nose pliers.



1. Enjoy your pendant!