

CRAW TUTORIAL

BEADING - 3 considerations

- Beads
- The thread we want to use
 - Thread to disappear
 - Thread to show as part of a design element
- **Thread path**


The Thread path determines which stitch you are making.

PRISMATIC BEADWEAVING AND CRAW

CRAW IS PRISMATIC BEADWEAVING USING A 4-BEAD STRUCTURE.

Handouts and Tutorials on CRAW:

Who has the best printable and video tutorials:

- Beadworkers Guild, UK, BWG, has permitted us to use their tutorial.
 -  Cubic-Right-Angle-Weave-CRAW-1.pdf
- [Artbeads.com](https://artbeads.com) Design Studio, CRAW How to

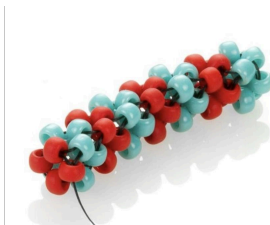
But first, we will make a visual, CRAW reference sample.

- We will make a large bead CRAW sample for visual reference. Paulette will supply the beads, thread, and needles.
 - Using 2 color of beads to understand the 4-bead CRAW structure.

[Artbeads.com](https://artbeads.com) has the best tutorial.

<https://artbeads.com/design-studio/cubic-right-angle-weave-how-to/>

 Artbeads Quick Tutorial - Cubic Right Angle Weave (CRAW) Seed Bead Rope with Cheri ...



- [Artbead.com](https://artbeads.com) Tutorial: A Photo Array from [Artbeads.com](https://artbeads.com) CRAW tutorial Handout
 - Shows CRAW steps using 2 bead colors
 - Written out explaining the structure of a Cube using beads:
 - Cube with a Core 4 bead structure using RAW (right-angle weave)
 - What's the CRAW = Cube
 - Floor/ base = Core
 - Walls or Sides = (4) sides

- The top or (ceiling), which becomes the next Core/floor, as you build the next CRAW unit.

We will be making an alternating 2-color CRAW.

- RAW unit with a Core/Floor, we make 4 sides, then close up the Ceiling (top) 4 beads = a Cube structure.
- The top 4 beads become the Core beads for the next CRAW unit. Then we build up from there, always starting with a 4-bead Core.

Supplies for Artbeads.com Tutorial:

- 2 Colors of 8/0 Seed Beads (Red and Blue are used, but any 2 colors, high contrast beads, and label them Red and Blue)
- Use #10 or needle of choice and Fireline Thread, such as 6 lb thread.
- Stop bead

RAW Unit = 4 Core Bead = Floor

Steps 1 & 2: Pick up 4 **Red** beads and pass through the 1st bead to make a circle.

Step 3: I reinforce the 4 bead circle or **Core** (floor) beads and pass through the needle and thread to the **Core 1 position**

CRAW - Cubic Right Angle Weave - Start a Cube by first adding the Walls from your Core/Floor Beads:

- **Mantra or pattern: Start- 4 beads, 3 beads, 2 beads, 2 beads, 1 bead, then Closure or Connect.**

1) Make the Core, **4 red beads**

2) Make the 1st Wall unit, 3 beads (**blue**) are added

3) Make the 2nd and 3rd Wall units one at a time. We use a bead in the **Core (Red)**, and add 2 Wall beads (**blue**), and we connect to the beads in the previous Wall unit.

4) The 4 Wall unit is made by using a **Core** bead and connecting to **1 Wall unit on the left**, adding 1 **blue** Bead, and connecting to the **Wall Unit on the right**, and completing the circle.

5) Closure of the ceiling - these 4 beads are not connected with thread, so we need to connect them together with thread, passing through each of the 4 beads.

Another Short Video:

CSDesigns has a 3-minute YouTube Video:

- **[Tutorial CRAW by CSBeaddesign ENG](#)**

No spoken words, video with diagrams of each step at the top of the video.

Patterns:

There are many available at Artbeads and [Bronzepony Beaded Jewelry](#) - YouTube has many CRAW tutorials on learning CRAW, necklaces, bracelets, and earring sets.

[Brozepony YouTube:](#)

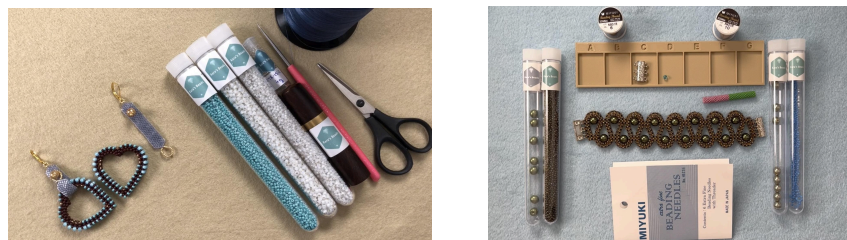
Paulette Mazurek - UMBS - Spring Retreat 2026
CRAW Tutorial & Prismatic & CRAW Tools. (Extra Bonus: Peyote Starter Strips)

[CRAW TUTORIALS - 19 total](#)

[Prismatic RAW Tutorials -8 Videos](#)

KaraDiamondArt YouTube:

<https://www.youtube.com/@KarasDiamondArt>



She has a few patterns on CRAW using an awl or her beaded CRAW tools:

▶ [CRAW Heart Charm Tutorial | Interchangeable Earrings | Beaded Shapes | DIY](#)
(CRAW & then work on the side of the RAW Wall).

- CRAW HEART 11/0 main color; 8/0, 11/0 & 15/0 same color

Side CRAW Connection:

- We have Core/ floor 1 unit and 1 Core/ceiling of 2nd CRAW
- Need to add 4 Wall in between the 2 CRAW units

CRAW Unit to CRAW Unit Side Connection:

- But we have 1 bead from 1 CRAW and 1 bead from CRAW 2, so we only need to add 2 beads for Wall 1
- For 2nd & 3rd Wall we only need to add 1 bead because we use beads from 1 Core bead, 1 Wall bead, and 1 bead from the Ceiling. (3 bead + 1 bead =4)
- The 4th Wall is connection of 4 beads

(Mantra is: use Core and Ceiling of opposing CRAW units; Add 2 beads, 1 bead, 1 bead, then connect,)

▶ [Serpentine Bracelet Tutorial | CRAW Beading Toho Czech Druks](#)

(CRAW Unit Set & Side CRAW Connection)

- All 1 Color & (16) 8mm pearls or Druks
- 19 CRAW UNITS move to form a loop and side connection; adding beads to make a CRAW UNIT between or middle of the 2 ends.
 - See 3 CRAW wide at base
- Add 1 CRAW from Right side of 3 and add 12 more CRAW = total 13 CRAW units
- Count from 1st Unit CRAW up 6 CRAW UNITS
 - We will connect the side of this CRAW to the side of the 13th CRAW, moving the lower CRAW forming a loop toward the 6th CRAW unit. 14:14

PRISMATIC AND CRAW TOOL & POLYMER CLAY TOOLS:

[Carefree Creations Etsy](#)

<https://www.etsy.com/shop/CarefreeCreation>

- Beaders Tools: Prismatic Tool (CRAW), 4-bead, 3-bead, 5-bead Tools
- Bead Mat Trays Open or closed base
- Bead Tray containers with lids and base
- PC Cane Slicers tools, cutters, and stamps

https://www.etsy.com/listing/985332373/craw-tool-praw-tool-beading-jig-3d?ref=share_ios_native_control



[UMBS Discount Code PDF](#)

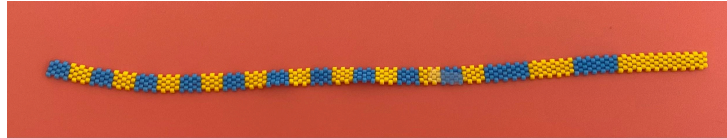
 **NEW CRAW tool video.**

Shown are PRAW In: 3 bead, 4 bead (CRAW), 5 bead, & 6 bead all are PRAW

- The floor/Core beads are the number in PRAW
- The Wall construction is always 4 beads (RAW).
- How many Walls? It's based on the PRAW you want to make - 3 Bead PRAW, 3 Walls; 4 PRAW = (CRAW), 4 Walls, etc

Extra Bonus Peyote Counter Starter Strips:

Counter Strips to measure a Cabachon to bezel using peyote strip:



Alternating 5-bead peyote in 2 colors X 10, and 3 x 10-bead peyote, then 20-bead peyote.

Two Color Peyote Starter Strip, a Two-sided Counter:

- It can be used to make bracelets, coasters, and tapestries.



@KarasDiamondArt YouTube

Starter Strips Videos:

Peyote

- [DIY Peyote Starter and How to Use It | Miyuki Delica](#)

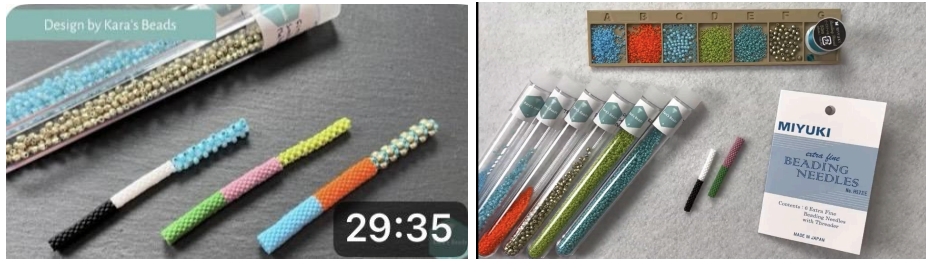
Supplies:

- 2 colors of Delicas, **White and Black Delicas**
- You make it as wide as you want

General Instructions:

- She made one 5 Rows x 34 Peyote Wide in White Delicas and then 5 Rows in Black Delicas x 34 peyote Wide - for a total of 10 long, peyote stitch
 - For 34 peyote Wide: Pick up 68 White Delicas and we will peyote 5 Rows.
 - Peyote - 34 White Delicas. This forms Rows 1, 2, & 3, count on the diagonal.
 - For Rows 3-5, Peyote 34 White delicas.
 - For the Black side: Peyote 5 Rows of 34 Delicas, for each Row, 1-5.
- Two colors: so you can use either side, Black background peyote bracelet - use the White side. For a white or light-colored bracelet, use the Black side.
- The practice in the video uses 7 wide peyote in 2 colors.

2- Color Peyote STARTER STRIPS- Peyote Tubes for Prismatic RAW:



13:16 Shows 3-Bead PRAW

18:47 Shows 4- Bead PRAW is CRAW

Prismatic RAW:

- **3 bead:** 3 bead Core/floor, Walls are 4 bead RAW, Ceiling is 3 bead, which becomes the new Core/Floor, and ceiling is 4 beads.
- **4 bead Core**, and 4 RAW (4 beads) walls and ceiling
- **5 bead Core**, 5 RAW (4 beads) walls, and 5 bead ceiling.

▶ CRAW and PRAW Starter Tool Tutorial and How to Use It

Prismatic RAW: 3, 4 (CRAW), 5

Formulas:

3: $3 \times 4 = 12$; Peyote Stitch strip, we will form into a tube.

4: $4 \times 4 = 16$; Peyote Stitch strip, we will form into a tube.

5: $5 \times 4 = 20$; Peyote Stitch strip, we will form into a tube.

Supplies:

- Need 2 colors of Delicas
- For CRAW: 8/0 seed beads - filler for CRAW Tube, so it doesn't clasp.
- For 5-Bead: 3mm Firepolish to fill 5-Prismatic Tube, so it doesn't clasp.
 - We only fill part of the Peyote tube, leaving the ends open, unfilled with beads. We add the filler with beads to make it sturdy and prevent collapse.

Instructions:

Make a Peyote Strip, then zip the peyote strip together into a tube.

For each strip, pick up 20 color A and 20 color B = 40 Delicas beads

- **3: Peyote 12 Rows and Zip to form a tube. (Sample to Show)**
- 4, CRAW: Peyote 16 Row and Zip to form a tube.
 - You will fill this tube with 8/0s to prevent it from collapsing.
- 5: Peyotes 20 Rows and Zip to form a tube.
 - You will fill this tube with 3 mm firepolish, so it doesn't collapse.

Arms length of thread and Stop bead

20 beads (A) and 20 (B) beads

Peyote the formula shown

Tie off threads

3-Bead CORE, PRAW:

Pattern: Core bead, stop bead, Core bead, stop bead, Core bead, stop bead is the pattern.

- We will add Core bead and then go down DB; add the Stop bead, then go up DB and repeat.

Arms length of Thread & Stop bead.

- At top edge, with needle, go Up 1 DB
- Pick up (PU) 1 CORE - 8/0 and then go down next DB in rotation.
- PU Stop bead (this bead is not part of the 3-bead PRAW) and go Up next DB
- Repeat 2 more times
- Needle through the 3 Beads in Core/Floor
- So we have 3-Bead PRAW and will build off the floor 3-Beads which will be the core/Floor for the next 3- Bead PRAW

Walls = total 3 walls using RAW (4) beads

Wall (1) because we build off the 3-bead Core.

- Step up through the next Core Bead to the right
 - We have 1 Core bead so for 1st Wall we only need 3 beads = RAW (4) beads
- PU 3 beads and go to the same Core bead
 - Step up through the next Core Bead to the right
- Wall (2) - we have created 1 Core bead and 1 bead from Wall (1) so need only 2 RAW unit beads
 - PU 2 beads and pass through (PT) Wall 1 side bead and same Core bead
 - Step up to next Core bead to the Right.
- Wall 3 - we have Core bead, Wall 1 side bead, so only need to add 1 beads
 - PU 1 Core bead and PT Wall 1 side bead and Core/Floor and PT Wall 2 side bead= (4 bead RAW)
 - We have made the 3 Walls and by doing so we also made the 3-bead ceiling. These beads are not connected by a thread path.
- Pass your needle through each of the 3-bead ceiling to secure.
- This ceiling now become the Core/Floor.
- Repeat making 3 Walls - 4 bead (RAW)