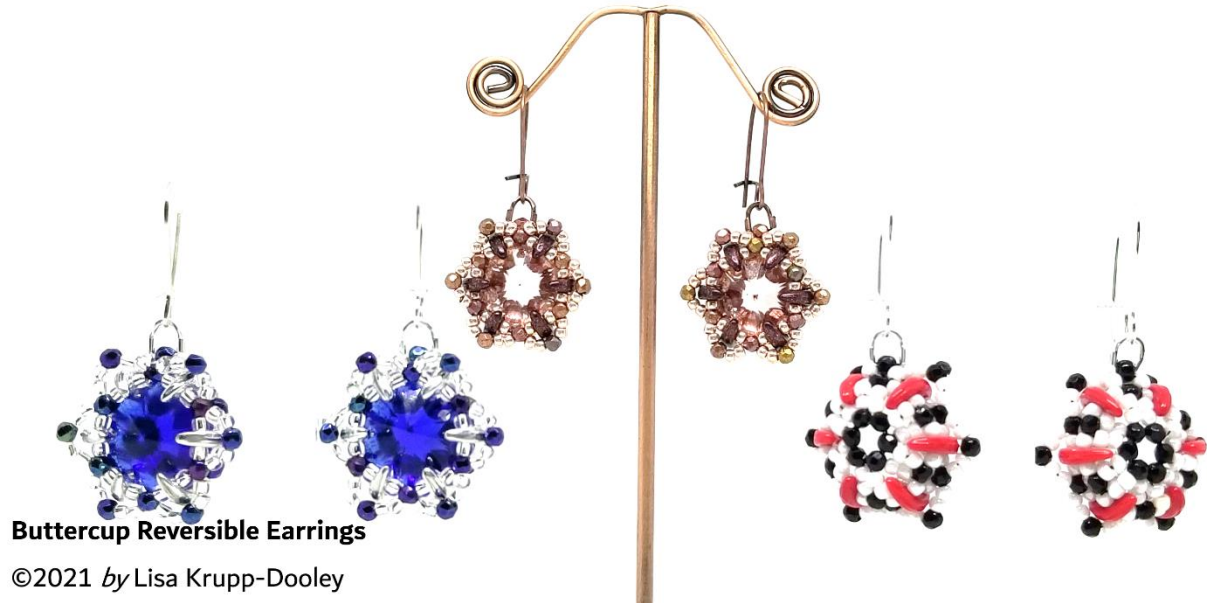


Buttercup Reversible Earrings

©2021 by Lisa Krupp-Dooley



Buttercup Reversible Earrings

©2021 by Lisa Krupp-Dooley

Supplies List

2	14mm crystal flowers
1 gram	15° seed beads
50	2mm Fire Polish
2 grams (12 count)	2-hole Crescents (10x3mm)
2	4.5mm wire protectors
2	Kidney ear wires
4 yards	TOHO One-G Thread

Description: *Capture a beautiful flower crystal using the Czechmate 2-hole Crescent beads. Best of all, this reversible, component-based design can be used to make a matching bracelet and/or necklace too!*

Buttercup Reversible Earrings

Blush colorway

2	14mm crystal flowers	Blush
1 gram	15° seed beads	P.F. Galvanized Pink (#PF552)
50	2mm Fire Polish	Matte Metallic Gold Copper Iris
2 grams (12 count)	2-hole Crescents (10x3mm)	Polychrome Rose
2	4.5mm wire protectors	Antique Copper
2	Kidney ear wires	Antique Copper
4 yards	TOHO One-G Thread	Mauve

Contemporary colorway

2	14mm crystal flowers	Crystal
1 gram	15° seed beads	White Opaque Luster (#121)
50	2mm Fire Polish	Jet
2 grams (12 count)	2-hole Crescents (10x3mm)	Opaque Red
2	4.5mm wire protectors	Silver-plated
2	Kidney ear wires	Silver-plated
4 yards	TOHO One-G Thread	White

Cobalt Blue colorway

2	14mm crystal flowers	Cobalt Blue
1 gram	15° seed beads	Silver-Lined Crystal
50	2mm Fire Polish	Iris Blue
2 grams (12 count)	2-hole Crescents (10x3mm)	Silver
2	4.5mm wire protectors	Silver-plated
2	Kidney ear wires	Silver-plated
4 yards	TOHO One-G Thread	Blue